

MISCHIEF





SPECIFICATIONS

BUILDER
BAGLIETTO

GUESTS | CREW
12 | 13

BUILT/REFIT
2006/2016/2018

LENGTH
54M (177FT)

CABINS
6 (1 MASTER, 1 VIP DOUBLE, 2 DOUBLES, 2 TWINS)

CRUISING SPEED | MAX SPEED
14 KNOTS | 17 KNOTS

SUMMER CRUISING
WESTERN MEDITERRANEAN

EXTERIOR SHOTS



MISCHIEF

“
FAMILY-FRIENDLY LAYOUT
”



MISCHIEFF



DESCRIPTION

Mischief is a striking looking yacht, with racy lines enhanced by her blue hull and white boot stripe. Her interiors are just as special – the dramatic use of white reflective surfaces accented with blues and blacks gives her a real sense of identity. Large photographs of stars of the screen, music and fashion add to the relaxed, fun feel. The spaces are fashion-forward rather than formal, inviting relaxation and enjoyment. The main salon features a large marble bar, with backlit mirrored wine and glass racks – a theme found in two further wine stores within the cabin. The upper deck sky lounge is yet another bright white space, with curving glass days inviting you out to the dining and eating areas on the aft deck. One of the VIP cabins also enjoys this vantage point. The master suite lies forward on the main deck, with two further large doubles and smaller twins on the

lower deck. These twin rooms would be great for children – and with all the entertainments on offer they'll barely spend any time in their cabins - or get up to mischief!

An inflatable slide lets you slip off the bows, then you can try to climb back up via the over-water climbing wall. Or take to the floating pontoons from the stern where you can relax on loungers right on the water, take out a jet ski, seabob or paddle board – or simply let the crew tow you around on an inflatable...

Mischief is a bright, lively yacht ideal for a family charter, or a fun time for friend



MISCHIEF



MISCHIEF

NOT FOR SALE OR CHARTER TO U.S. RESIDENTS WHILE IN U.S. WATERS

“

MISCHIEF IS A BRIGHT, LIGHT AND STYLISH SUPERYACHT
WITH A CHEEKY YET SOPHISTICATED AMBIENCE.

”

**MISCHIEF**



MISCHIEF

“

THE VERY LATEST
WATERTOYS

”



MISCHIEF

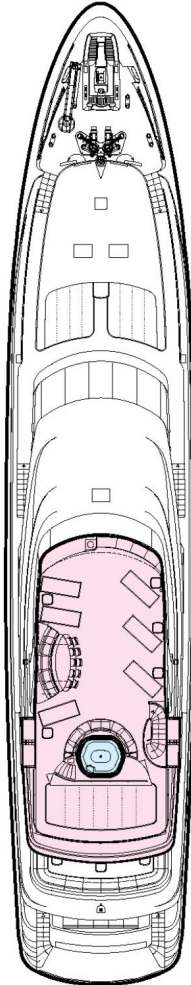


MISCHIEF

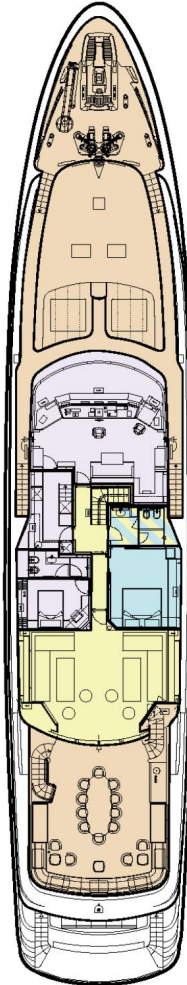
NOT FOR SALE OR CHARTER TO U.S. RESIDENTS WHILE IN U.S. WATERS

GENERAL ARRANGEMENT

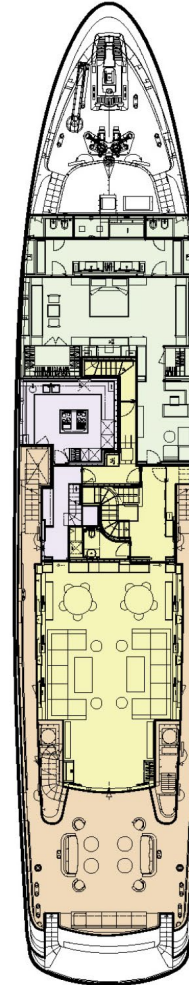
SUN DECK



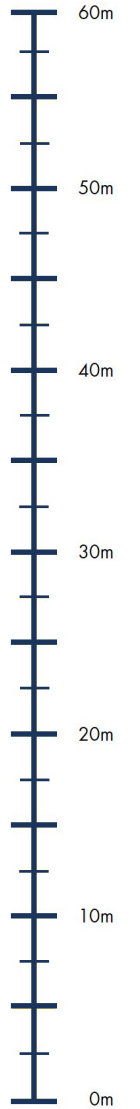
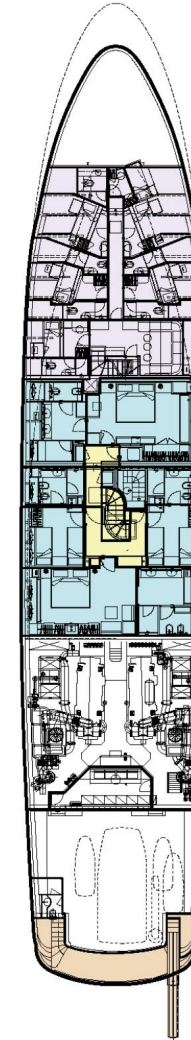
UPPER DECK



MAIN DECK



LOWER DECK



KEY

- Deck
- Guest Areas
- Master Cabin
- Sun Deck
- Guest Cabins
- Crew Areas

MISCHIEF

SPECIFICATIONS

LENGTH	54m / 177ft
BEAM	10.2m / 33ft
DRAFT	2.9m / 9.8ft
GROSS TONNAGE	700
GUESTS	12
CABINS	6
CONFIGURATION	1 Master Suite, 1 VIP Suite 2 Double Suites, 2 Twin Suites
CREW	13
BUILDER	Baglietto
EXTERIOR DESIGN	Francesco Paszkowski
INTERIOR DESIGN	Blainey North
NAVAL ARCHITECT	Baglietto
YEAR	2006
REFIT	2018
HULL	Steel + Aluminium
ENGINES	2 x Caterpillar 2,650hp
CRUISING/MAX SPEED	14/17 Knots
FUEL CONSUMPTION	90,000 Litres

TENDERS & EQUIPMENT

TENDERS

1x Castoldi 7m Jet Tender

WATERSPORTS

2 x 260 GTX seadoo Jet Ski (New 2016)

2 x Seabobs

4 x Paddle Boards

1 x Jetlev

4 x Inflatable rafts make up water sports area off the stern, with Sun lounges

Multiple inflatable towable toys

Wakeboards and Waterskis

Knee-board

Extensive Fishing equipment

Multiple Masks and Snorkels

Climbing Wall and Slide

ENTERTAINMENT

Apple TV

iPod docking systems with speaker connecting all decks

Xbox

Huge movie server - available on all TVs, and in all guest cabins

85-inch mirrored entertainment screens

Silent Disco – 30 silent disco headsets

MISCHIEF
